



Spare Parts and Customer Service

**Technology you can trust**

[www.claudiuspeters.com](http://www.claudiuspeters.com)

# Spare Parts

- With over 100 years experience in the material handling industry no-one knows Claudius Peters' equipment better.
- Only Claudius Peters' spare parts are guaranteed to meet our exacting specifications.
- Claudius Peters' comprehensive warranty for each and every part we sell.

## About

Across the globe, in the field of materials handling and processing, there is a name that is synonymous with innovation and technical excellence - Claudius Peters. We are active across a broad spectrum of industries and are one of the most trusted names in our field providing materials handling and process technologies from component supply to complete systems.

The Claudius Peters Group is a wholly owned subsidiary of Langley Holdings plc, a privately controlled UK engineering group, with regional offices in the Americas, China, India and Europe.

## Customer Care

At Claudius Peters, we understand fully the vital role our equipment plays in our client's business and just how important it is that we are able to support that equipment in the start-up handover phase and throughout it's life. To this end, Claudius Peters offers a wide range of customer services as listed below:

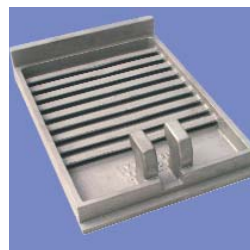
- Supply of original Claudius Peters spare parts
- Price lists and basic agreements
- Data measurement
- Inspection and maintenance
- Training of your maintenance personnel
- After sales service



*Claudius Peters Pump Spares*



*Claudius Peters Packing Plant Spares*



*Claudius Peters Cooler Grate Plate*



*Claudius Peters Clinker Cooler Crushing Ring*

## Price Lists and Basic Agreements

**Your advantages:**

- You can avoid expensive, time-consuming enquiries by using the Claudius Peters original spare parts price list tailored to your requirements.
- Price lists can be used for your budgetary purposes, eliminating pricing delays.
- A Frame-Contract can be established that contains all commercial conditions which will reduce and minimise handling-costs.
- The above will optimise our business relationship and maximise plant profitability and efficiency.

## Optimisation of Stock Keeping

You can never be certain which spare parts will actually be required for the trouble-free operation of a new plant. We would like to help you with your decision. We supply recommendations for start-up, 1 year and 2 years of operation, for optimisation of your plant and minimisation of your stock keeping costs. With Claudius Peters you can check your stock keeping of spare parts after the first year of operation. For this purpose our experts would be pleased to meet with you in order to determine the real spare parts requirements.

# Customer Service

## Data Measurement

Silos, Clinker Coolers, Packing & Dispatch Machines, Pneumatic Conveyance and other comparable installations are often overlooked when it comes to the possibilities of fine-tuning. Acknowledgement and adjustment of the relevant parameters are essential requirements for avoiding such loss of efficiency. Reliable data is essential to evaluate the actual production process and to improve performance. This can be carried out at your facility or in our state of the art laboratories and test centre located at our headquarters in Germany

### Benefits:

- Determination of the process status quo
- Recognition of weak points
- Initiating counter measures
- Reduction of power consumption

## Maintenance Training

Complex technical installations may offer several possibilities for optimisation. However, problems may be caused by improper operation or maintenance procedures. Therefore, an essential pre-requisite for successful operation is well trained technical staff. We recommend frequent training for your personnel with the scope of training determined individually. Training of staff is considered to be a substantial factor in fulfilling the ISO 9001 requirements and can be carried out at your facility or at the Claudius Peters training centre in Germany. Examples of training measures:

- Operation and repair of components and systems
- Basics and advanced configuration of the systems
- Process technology

## Inspection and Maintenance

Components and systems perform best when in ideal operating conditions. Our engineers are aware of the sensitive points and mechanical details of our equipment. In order to keep your equipment in best condition, we recommend frequent inspection by Claudius Peters' site engineers, and the appropriate preventive maintenance.

- Visual inspection
- Functional testing
- Optimum adjustment of process parameters

## After Sales Service

The "After Sales Service" ensures the transfer of knowledge and the latest practical application from Claudius Peters to the customer.

Special services are:

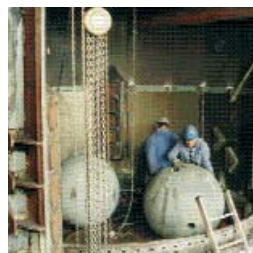
- Visual check of the CP systems operating in your plant
- Suggestions for optimisation of systems
- Support in preventive maintenance
- Advice on spare parts and stock-keeping



Laboratory Testing



Claudius Peters  
Engineering Support



Service of Claudius Peters  
Grinding Plant



Maintenance training is provided



Service of Claudius Peters  
Packing Plant

CALCINING . COOLING  
DISPATCH . DOSING  
DRY BLENDING . DRYING  
GRINDING . PACKING  
PNEUMATIC CONVEYING  
PULVERIZED FUEL SUPPLY  
SILO SYSTEMS  
STOCKYARD SYSTEMS  
ALUMINA HANDLING SYSTEMS  
TURNKEY PROJECTS



## Technology you can trust

### HEADQUARTERS

#### **Claudius Peters Technologies GmbH**

Schanzenstraße 40,  
D-21614 Buxtehude,

**Germany.**

Tel: +49 (0) 4161 706-0

Fax: +49 (0) 4161 706-270

[technologies@claudiuspeters.com](mailto:technologies@claudiuspeters.com)

#### **Claudius Peters Technologies S.A.**

34 Avenue de Suisse,  
F-68316 Illzach,

**France.**

Tel: +33 (0)3 89 31 33 00

Fax: +33 (0)3 89 61 95 25

[technologiesSA@claudiuspeters.com](mailto:technologiesSA@claudiuspeters.com)

#### **Claudius Peters (do Brasil) Ltda.**

Rua Coral, 3o Andar,  
09725-650 São Bernardo do Campo,  
São Paulo, **Brasil.**

Tel: +55 (11) 4122-6080

Fax: +55 (11) 4122-6090

[brasil@claudiuspeters.com](mailto:brasil@claudiuspeters.com)

#### **Claudius Peters (India) Pvt. Ltd.**

Unit 408, 4th Floor, Peninsula Plaza,  
A/16 Fun Republic Lane,  
Off Link Road, Andheri West,  
Mumbai 400 053, **India.**

Tel: +91 (22) 2674 0045

[india@claudiuspeters.com](mailto:india@claudiuspeters.com)

#### **Claudius Peters (Ibérica) S.A.**

Paseo de la Habana nº 202 Bis Bj,  
28036 Madrid,

**Spain.**

Tel: +34 91 413 36 16

Fax: +34 91 519 69 56

[iberica@claudiuspeters.com](mailto:iberica@claudiuspeters.com)

#### **Claudius Peters (China) Ltd.**

Unit A, 10/F, Two Chinachem Plaza,  
68 Connaught Road Central, **Hong Kong.**

Tel: +852 2544 1848

Fax: +852 2854 0011

[hongkong@claudiuspeters.com](mailto:hongkong@claudiuspeters.com)

#### **Claudius Peters (Italiana) srl**

Via Verdi, 2, I-24121,  
Bergamo, **Italy.**

Tel: +39 0 35 237 196

Fax: +39 0 35 237 785

[italiana@claudiuspeters.com](mailto:italiana@claudiuspeters.com)

#### **Claudius Peters (UK) Ltd.**

Unit 10, Thatcham Business Village,  
Colthrop Way, Thatcham,  
Berkshire, RG19 4LW,

**United Kingdom.**

Tel: +44 (0) 1635 872139

Fax: +44 (0) 1635 861659

[uk@claudiuspeters.com](mailto:uk@claudiuspeters.com)

#### Branch Office:

7/F, Office Block,

Hong Kong Macau Centre,  
No. 2 Chaoyangmen Bei Da Jie,  
Beijing 100027, P.R. **China.**

Tel: +86 10 6501 3831

Fax: +86 10 6501 3803

[beijing@claudiuspeters.com](mailto:beijing@claudiuspeters.com)

#### **Claudius Peters (România) S.R.L.**

Str. Oituz Nr. 25C, et 2,  
550337 Sibiu, **România.**

Tel: +40 (0) 369 407 036

Fax: +40 (0) 369 407 038

[romania@claudiuspeters.com](mailto:romania@claudiuspeters.com)

#### **Claudius Peters (Americas) Inc.**

4141 Blue Lake Circle,  
Dallas, Texas 75244, **USA.**

Tel: +1 972 386 4451

Fax: +1 972 386 4497

[dallas@claudiuspeters.com](mailto:dallas@claudiuspeters.com)

#### **Claudius Peters Projects GmbH**

Schanzenstraße 40,  
D-21614 Buxtehude,

**Germany.**

Tel: +49 (0) 4161 706-0

Fax: +49 (0) 4161 706-270

[projects@claudiuspeters.com](mailto:projects@claudiuspeters.com)

**Service & Spares**  
**email: [aftermarket@claudiuspeters.com](mailto:aftermarket@claudiuspeters.com)**

The information contained within this brochure is deemed to be correct at the time of going to press. Due to the policy of continued improvement, we reserve the right to change any specification without prior notice.  
ERRORS & OMISSIONS EXCEPTED