

Claudius Peters PACPAL

Big Bag Fill

Our advantages

- Big Bag Filling in state-of-the-art design
- Compact and modular machine concept
- Optimized energy consumption with most innovative drive technology
- Capacity: up to 30 big bag/h



Packing systems for Cement, Gypsum and other building materials

Operational

- Suitable for handling of most common big bag types
- Automatic tara setting
- Load cells on the machine top
- Low degree of maintenance = high degree of availability
- Easy interactive operation and human machine interface (HMI)

Production basics

- Capable for cement and other building materials
- Bag weight from 500 - 2.000 kg
- Bag types: 2-4 loop big bags
- Pallet types: All industrial pallets
- Individual solutions with conveying part (Bulk or Big Bag) upon request

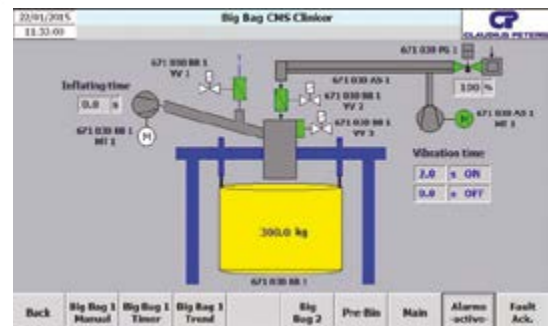
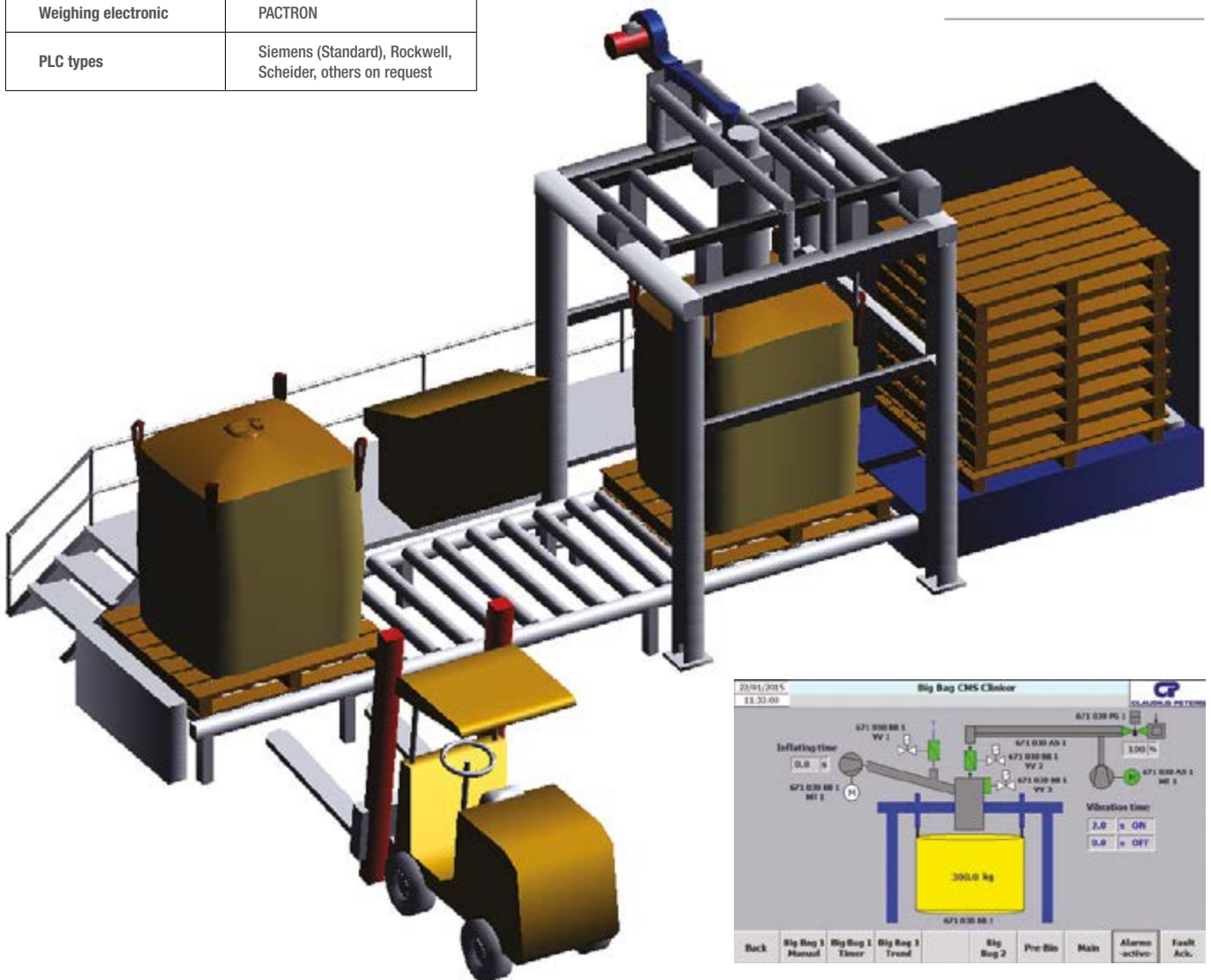


Big Bag Fill

Main voltage	380 up to 690 V 3 phase
Frequency	50 or 60 Hz
Control voltage	24 V DC
Power connecting value	less 1kW (main machine)
Motor protection class	IP54 or higher
Pneumatic connection	6 bar
Compressed air value	5 m ³ /h control air
Weighing electronic	PACTRON
PLC types	Siemens (Standard), Rockwell, Scheider, others on request



Bulk Handling,
Packing, Palletizing
and Dispatch from
one source



A Langley Holdings Company

Claudius Peters Projects GmbH

Schanzenstraße 40, DE-21614 Buxtehude, Germany

T: +49 4161 706-0, E: projects@claudiuspeters.com

claudiuspeters.com

CP PACPAL Big Bag Fill (GB) 04/2016 / Issue 1. Due to a policy of continued improvement, we reserve the right to change any specification without prior notice. ERRORS & OMISSIONS EXCEPTED.