



CLAUDIUS PETERS

Components

Lump Breaker

The main function of the Claudius Peters Lump Breaker is crushing of lumps which have formed, for instance, due to hydration in silos or bins.

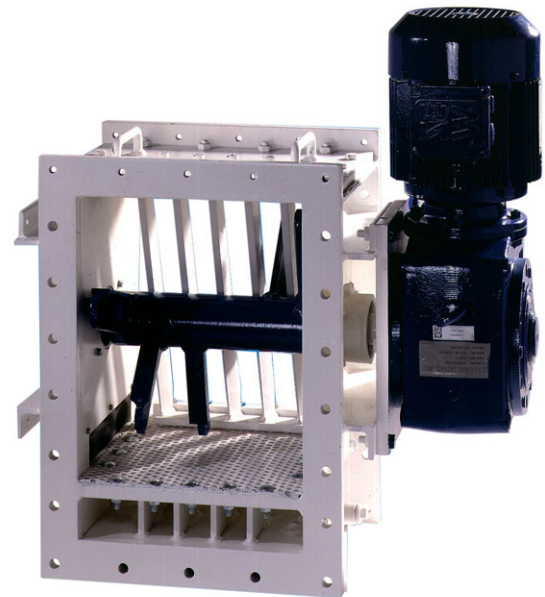
A horizontal or vertical type lump breaker is available and is used in the discharge area in front of the discharge equipment, for example flow control gates.

A rotor with crushing arms arranged radially and displaced on the shaft, draws the lumps against a grate where it crushes the lumps.

The operational safety of the Claudius Peters Lump Breaker is ensured by an optional overload cut-out with reversing duty. This is realized by an integrated control board.

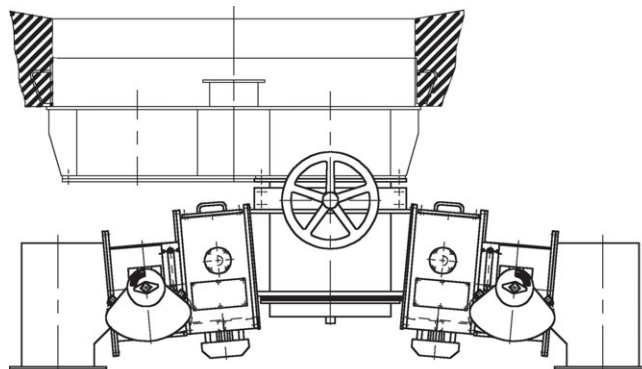
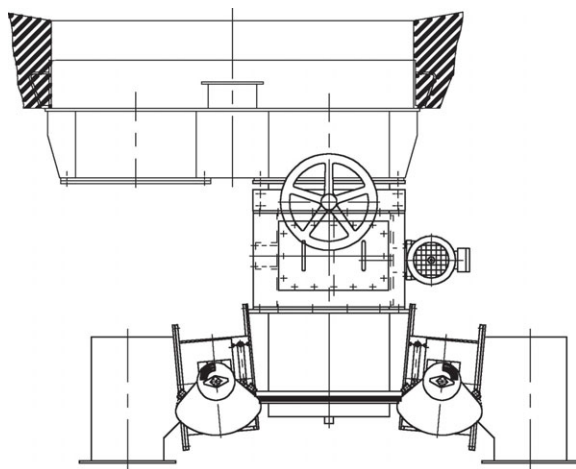
Advantages of the Claudius Peters Lump Breaker MH and MV

- Mass flow of cement up to 1000 t/h
- Available for all aeroslides and silo outlets
- Designed for high material temperatures up to 180 °C
- Low energy consumption 0,75 kW at 25 min⁻¹
- Rotor and grate insert designed for disagglomeration of lumps up-to a size of 40mm
- Easy maintenance
- Integrated rotary speed sensor
- Optional switchboard for integrated overload detection and reversing control



Detail of breaker and grid

Lump Breaker



Lump Breaker MV (vertical)

Lump Breaker MH (horizontal)

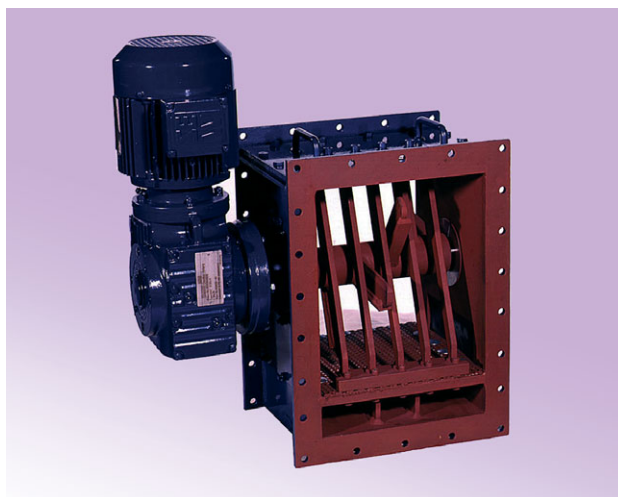
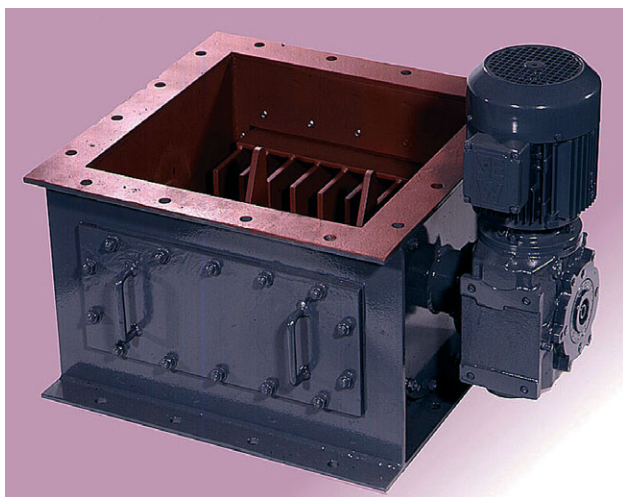


Table of sizes [mm]

Vertical type MV	Horizontal type MH
	250
	300
400 x 400	350
500 x 500	400
600 x 600	500
	630



A Langley Holdings Company

Claudius Peters Projects GmbH

Schanzenstraße 40 | D-21614 Buxtehude | Germany

T: +49 4161 706-0 | E: projects@claudiuspeters.com

www.claudiuspeters.com

-CP Components (GB) 03/2016/Issue 1

Due to the policy of continued improvement, we reserve the right to change any specification without prior notice.

ERRORS & OMISSIONS EXCEPTED