



CLAUDIUS PETERS

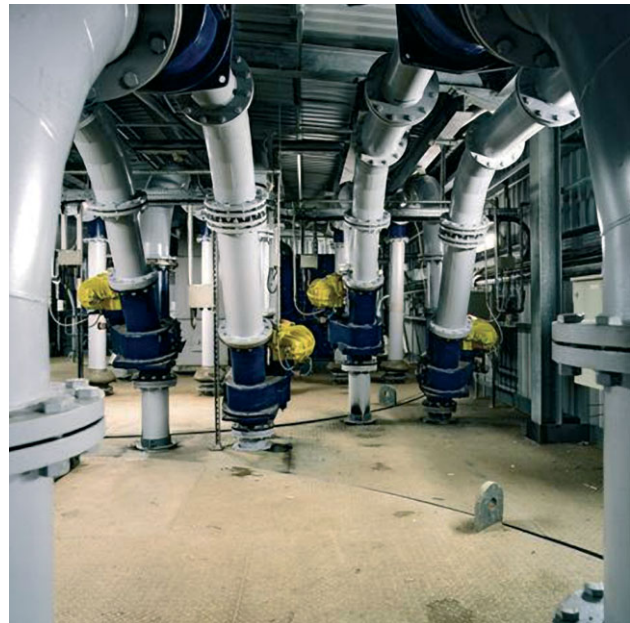
# Components

## Two-Way Valve

The Claudius Peters Two-Way Valve is installed in pneumatic conveying pipelines for alternative feeding of two material conveying routes. The most striking feature of the two-way valve is its compact design. The drive is flanged directly to the shaft which allows for a most precise positioning of the valve disk. The Claudius Peters Two-Way Valve is designed for non-explosive and explosive bulk materials.

One basic device can be supplied with different drive variants such as:

- H (manual),
- P (pneumatic drive)
- M (motor actuator drive)



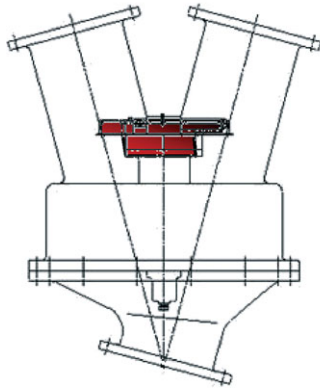
### Advantages of Claudius Peters Two-Way Valve

- Feeding to two different conveying routes
- Low pressure loss
- Symmetric form
- Simple exchange of wear parts
- Long service life
- Compact design
- High positioning accuracy
- Simple installation
- Precise movement to the sealing position
- End positions of the valve disk are defined by the limit switches integrated in the drive

# Two-Way Valve

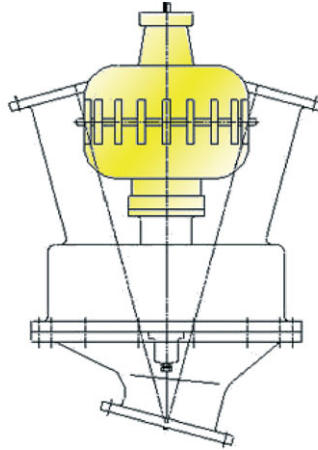
## Type MANUAL

Manually by lever



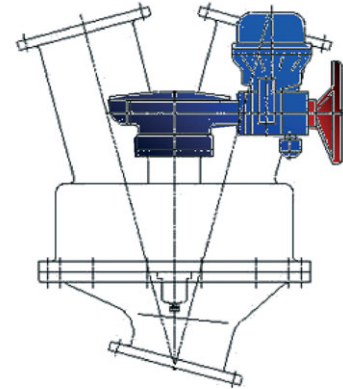
## Type PNEU

Pneumatically by electro-pneumatic rotary vane drive

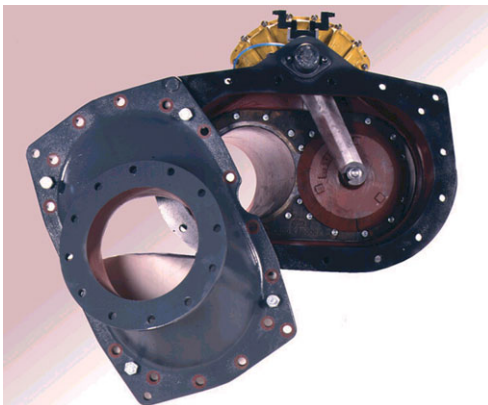


## Type MOT

Motor-driven by actuator drive (incl. manual handwheel)



Design	Non-explosive solids STANDARD TYPE	Explosive bulk solids PRESSURE SHOCK RESISTANT TYPE Directive 2014/34/EU
Conveying pressure [bar(g)]	≤ 1,5	≤ 1,2
Atmospheric explosion overpressure of the bulk material [bar(g)]	-	≤ to 10
Temperature range of the bulk material [°C]	- 40 ... + 150	- 10...+ 100



### Intelligent maintenance concept

- For dismantling of the wear plate and the valve disk, the housing can be opened and swung to the side
- Automatic lubrication of the rotary shaft
- For cleaning of the valve as well as for checking of the wear plate and the valve disk, the housing is equipped with a handhole cover



A Langley Holdings Company

## Claudius Peters Projects GmbH

Schanzenstraße 40 | D-21614 Buxtehude | Germany

T: +49 4161 706-0 | E: projects@claudiuspeters.com

[www.claudiuspeters.com](http://www.claudiuspeters.com)

CP Components (GB) 08/2017/Issue 1 433.0093.0021A/01.en

Due to the policy of continued improvement, we reserve the right to change any specification without prior notice.

ERRORS & OMISSIONS EXCEPTED